



2 Merino Gardens, London  
E1W

GARTON JONES.COM



# 2 Merino Gardens, London , E1W

GARTON JONES.COM

11 Park Street  
Chelsea Creek  
London  
SW6 2FS

Sales +44 (0) 20 7824 7090  
paul@gartonjones.com  
www.gartonjones.com

## £946 Per Week

Stunning Two-Bedroom Apartment at London Dock development by St George, in the heart of Wapping.

Stunning Two-Bedroom Apartment located on the 6th floor of this prestigious building within the London Dock development by St George, nestled in the heart of Wapping. The apartment offers 861 sqft (79.97 sqm) of elegant accommodation, comprising an entrance hall, open-plan modern living and kitchen area with balcony access, a master bedroom featuring an ensuite bathroom and built-in wardrobe, a second bedroom, and a family bathroom.

Development location:

- 0.5 miles from Tower Hill Underground station

- Close to Tower Bridge, Tower of London, and St Katharine Docks

Resident amenities:

- Private screening room

- Spa and gym

- Squash court

- Virtual golf facilities

- 24-hour concierge service

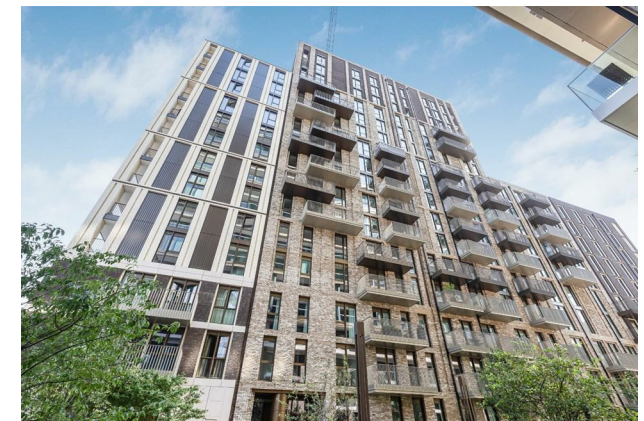
6 Weeks Security Deposit

12 Month Tenancy

Council Tax — Tower Hamlets, Band TBC

EPC — B (82)

- Brand New Two Bedroom Apartment
- 6th Floor With Lift
- 861sqft (79.97sqm)
- Furnished
- Highly Desirable Berkeley Homes Development
- 24 Hour Concierge
- Premium Residents facilities — Including Gym, Spa, Virtual Golf, Cinema and Residents Lounge
- 0.5m to Tower Hill Station
- Available 20th August 2025
- EPC — B (82)



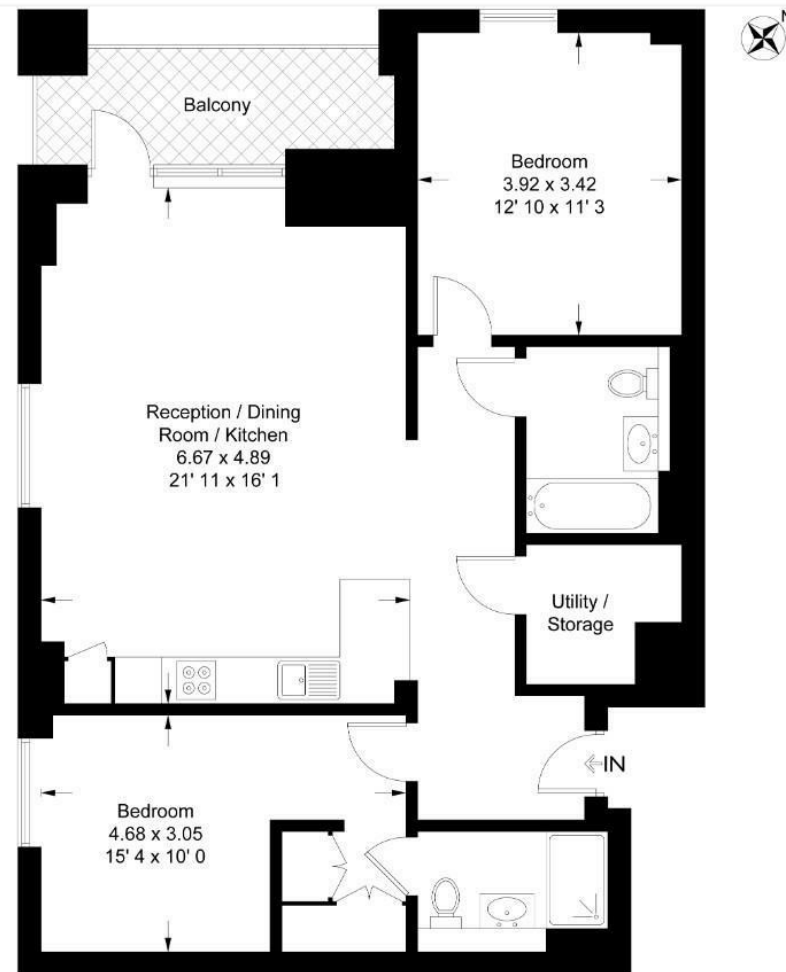
EPC certificate available on request.



**Merino Gardens**

Approximate Gross Internal Area = 916 sq ft / 85.1 sq m  
Balcony = 68 sq ft / 6.3 sq m

GARTON JONES  
LONDON



**Sixth Floor**

This plan is not to scale and must be used as layout guidance only. All measurements and areas are approximate and should not be relied upon to provide accurate information. This plan must not be relied upon when making property valuations, design considerations or any other such relevant decisions. We accept no responsibility or liability (whether in contract, tort or otherwise) in relation to any loss whatsoever arising from or in connection with any use of this plan or the adequacy, accuracy or completeness of it or any information within it.



